

BETA MARINE

HOW TO IDENTIFY YOUR BETA MARINE ENGINE

Your Beta marine engine can be positively identified one of two ways.

1) The **W.O.C. number**. Which stands for **Works Order Number**.

The W.O.C. number is assigned by the Beta Marine factory and is unique to each engine that is marinized by Beta Marine. This number will provide the specifications for your particular engine's build.

The Works Order Number can normally be found in three different places.

- A) The original warranty paper work or bill of sale for the engine will include the W.O.C. number.
- B) The original owner's manual has an ID sticker found on or near page 4 that shows the W.O.C. number.
- C) The same ID sticker can be found applied near the top of the engine.

⚠ IMPORTANT! - To ensure you receive the correct advice or parts we ask you to always provide the **WOC (Works Order Card) number and/or the **engine serial number****

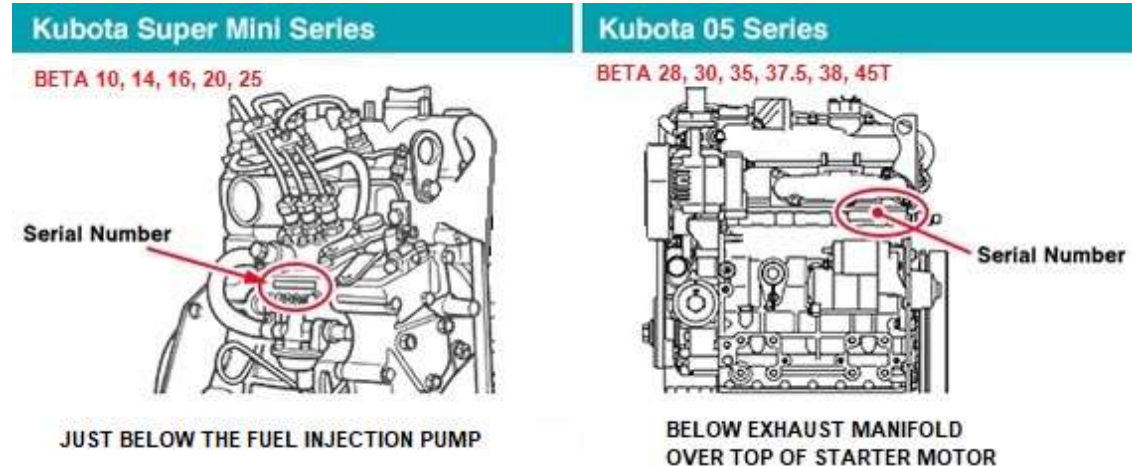


The engine specification label is located on the engine rocker cover, it details the WOC number, engine type, engine serial number and output in bhp.

BETA MARINE

2) The Kubota engine block serial number.

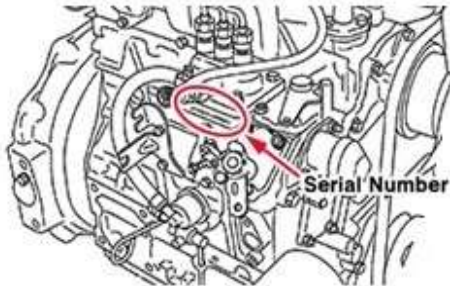
This number is assigned by the Kubota Corporation and is unique for each individual engine block. It can be found stamped into the block with characters about 1/4" tall. The numbers are found in various locations on the engine block depending on the engine model. Larger cast numbers will not identify the engine.



BETA MARINE

Kubota 03 Series

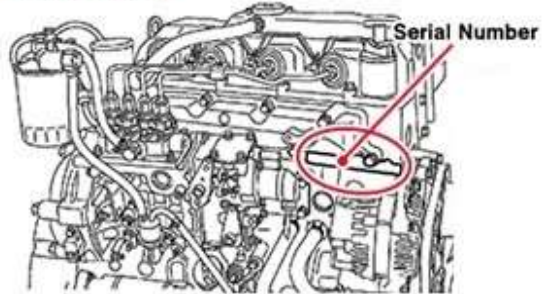
BETA 43, 50 60, 62T



**LOCATED JUST BELOW FUEL INJECTION
PUMP MOUNTING SURFACE**

Kubota 07 Series

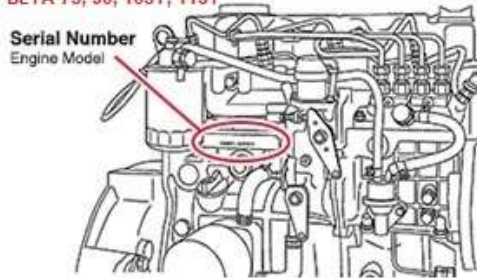
BETA 70T, 85T



**BELOW INTAKE MANIFOLD
ABOVE ALTERNATOR**

Kubota V3 Series

BETA 75, 90, 105T, 115T



**BELOW INTAKE MANIFOLD
ABOVE OIL FILTER MOUNT**